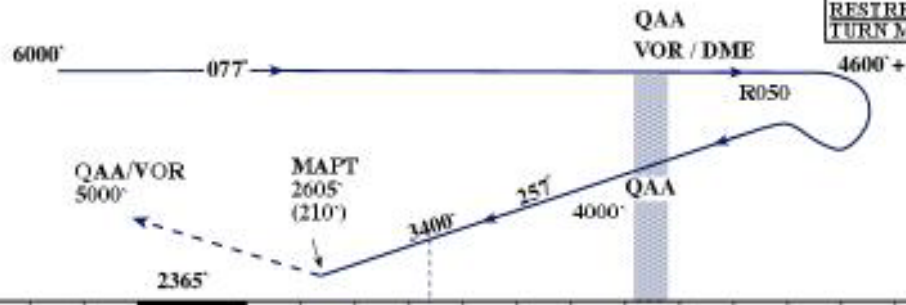


MISSED APPROACH
CLIMB STRAIGHT AHEAD TO 5000FT, TURN LEFT, AND PROCEED TO QAA VOR MAINTAINING 5000FT OR AS DIRECTED BY ATC.
RESTRICTION:
TURN MUST BE CONTAINED WITHIN TMA.



OCA / H	
ILS	2605(210)FT
NO GP	2645(250)FT

NM	OCL CIRCLING		TIME TO / FROM THR IN MIN AND SEC							
	3NM	5NM	90KT	100KT	110KT	120KT	130KT	140KT	150KT	160KT
		3200	3400							